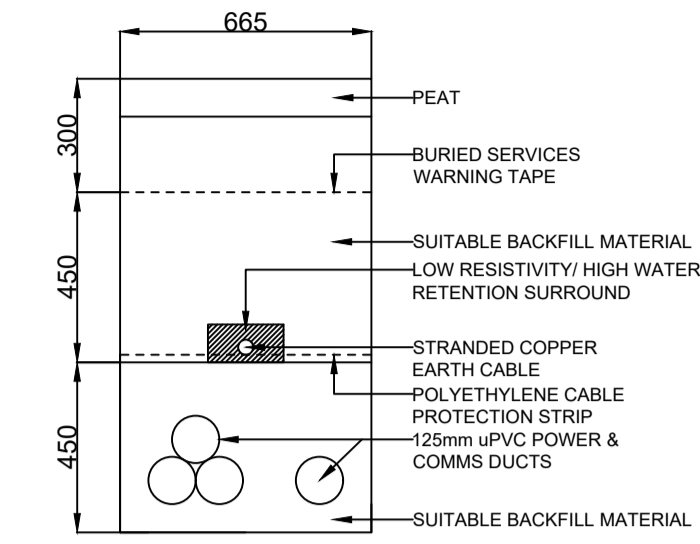
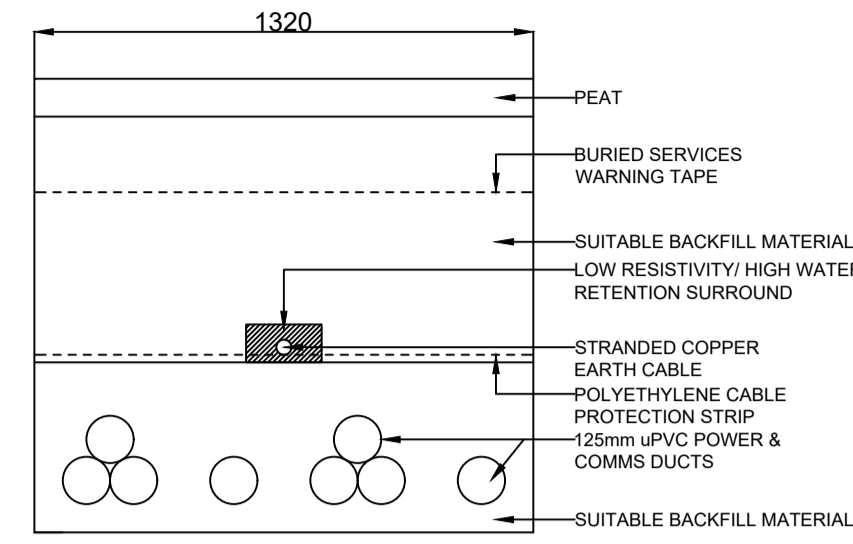


NOTES:

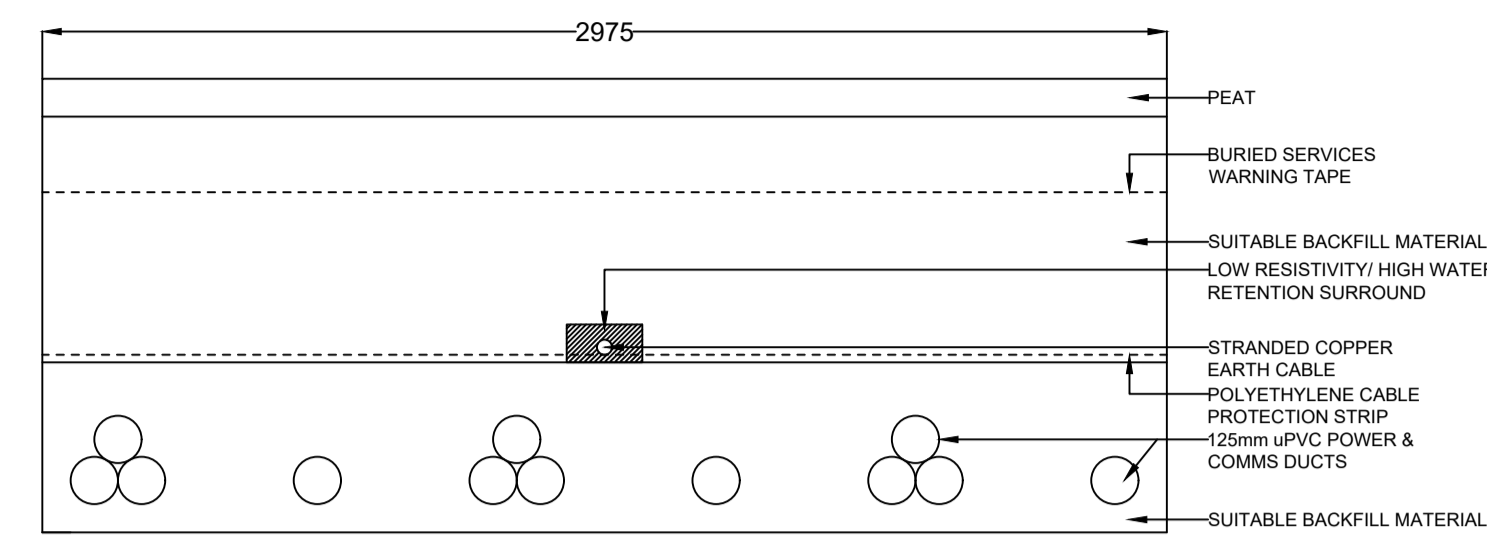
1. ALL DIMENSIONS NOTED ARE IN MM
2. DRAWING IS FOR PLANNING PURPOSES ONLY
3. COPPER STRANDED EARTH CABLE TO BE SIZED IN ACCORDANCE WITH EARTHING AND LIGHTNING STUDIES
4. SUITABLE BACKFILL MATERIAL IS SUBJECT TO THE APPROVAL OF THE RESIDENT ENGINEER
5. TRENCH WIDTHS ARE INDICATIVE ARE TO BE CONFIRMED DURING DETAILED DESIGN
6. DUCTING DESIGN SHOWN IS INDICATIVE AND DUCT TYPE/ LOCATION / SPACING IS TO BE CONFIRMED WITH THE ELECTRICAL CONTRACTOR/ DESIGNER PRIOR TO CONSTRUCTION WORKS COMMENCING
7. CABLE TRENCHING ROUTE IS TO AVOID TURBINE HARD STANDING AREA
8. JOINT SEALER SHALL BE A HOT 50 PEN BITUMEN BINDER OR COLD THIXTROPIC BITUMEN 50-70 PEN TO BE APPLIED TO ALL VERTICAL CUTS IN ACCORDANCE WITH B.S 594987 PRIOR TO APPLICATION OF BITUMINOUS MATERIAL



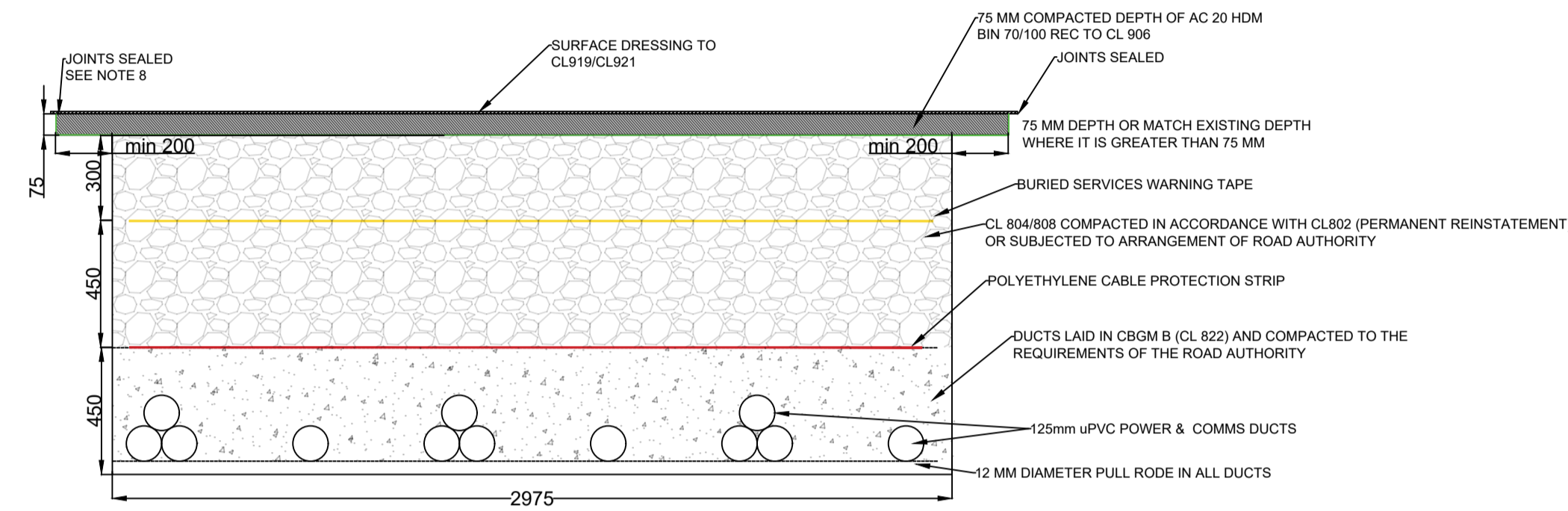
CABLE TRENCH TYPE 1



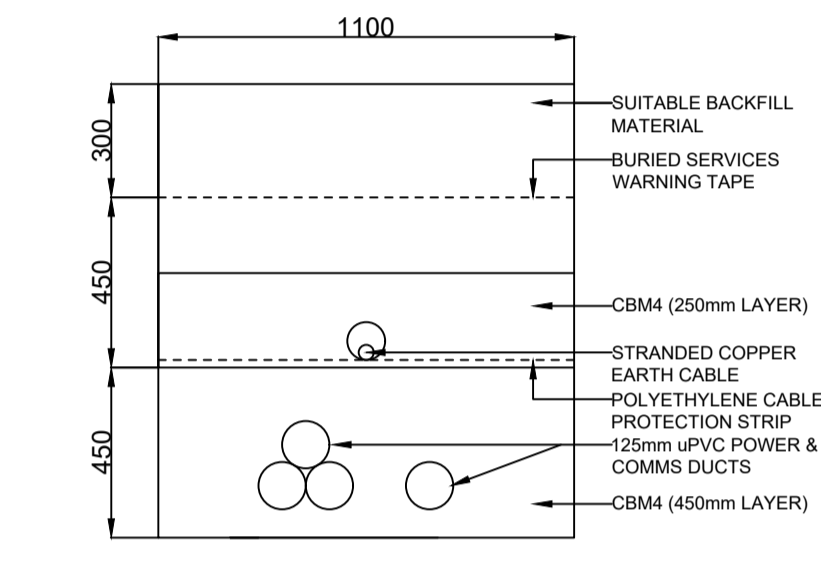
CABLE TRENCH TYPE 2



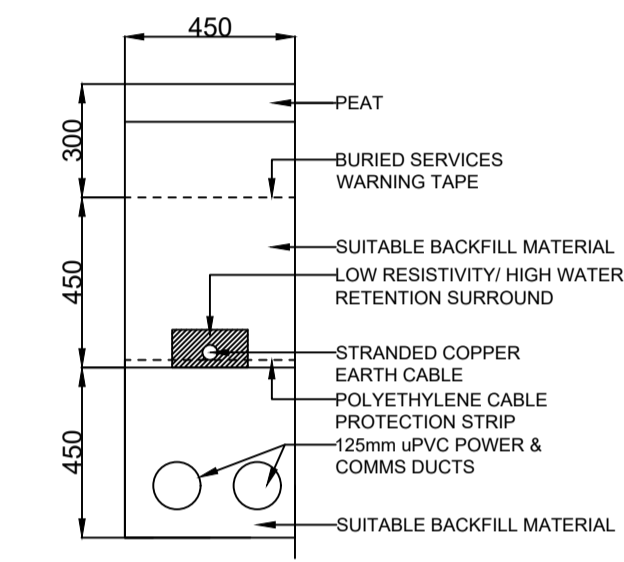
CABLE TRENCH TYPE 3



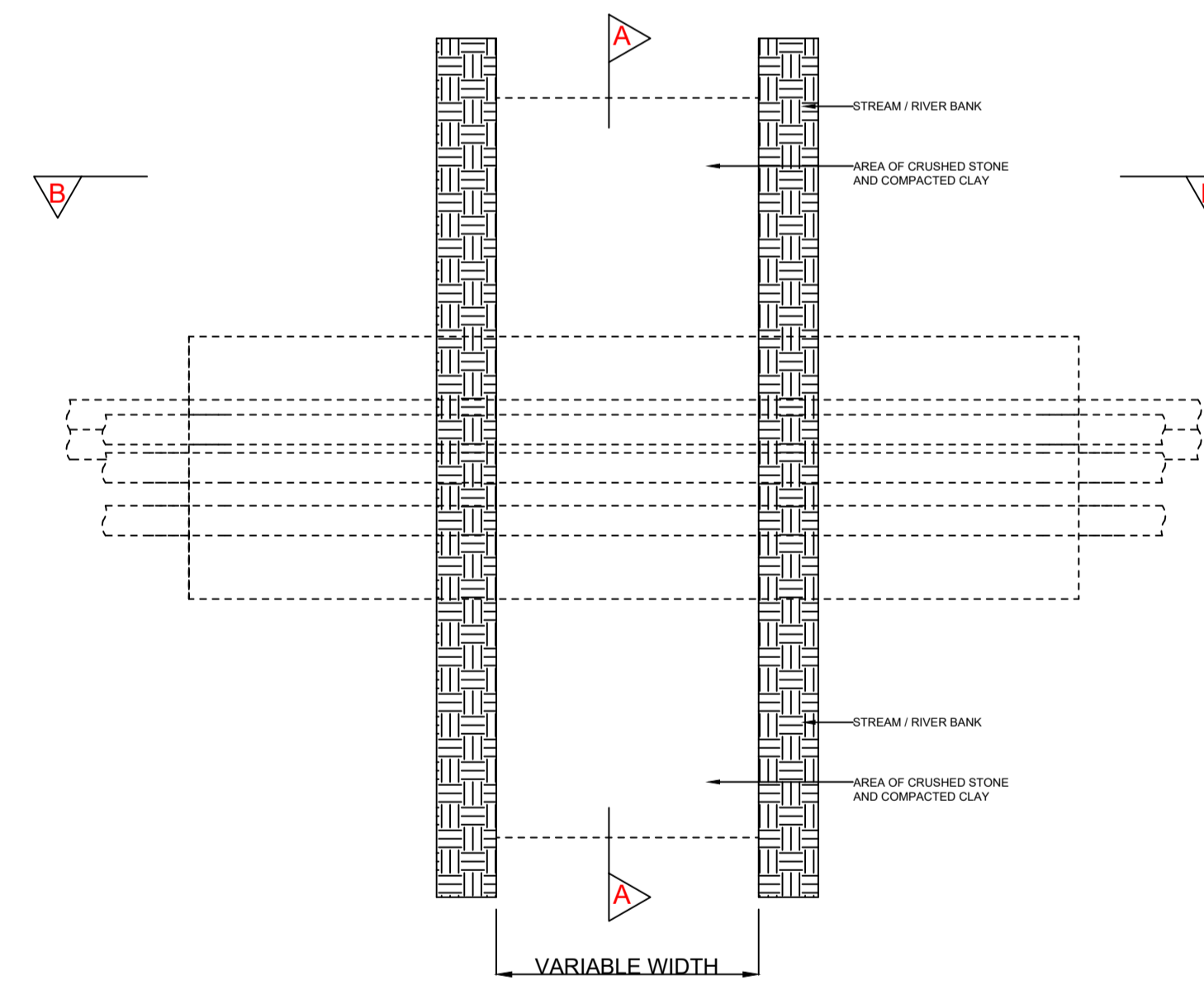
REINSTATEMENT DETAILS BASED ON GUIDELINES FOR MANAGING OPENINGS IN PUBLIC ROADS



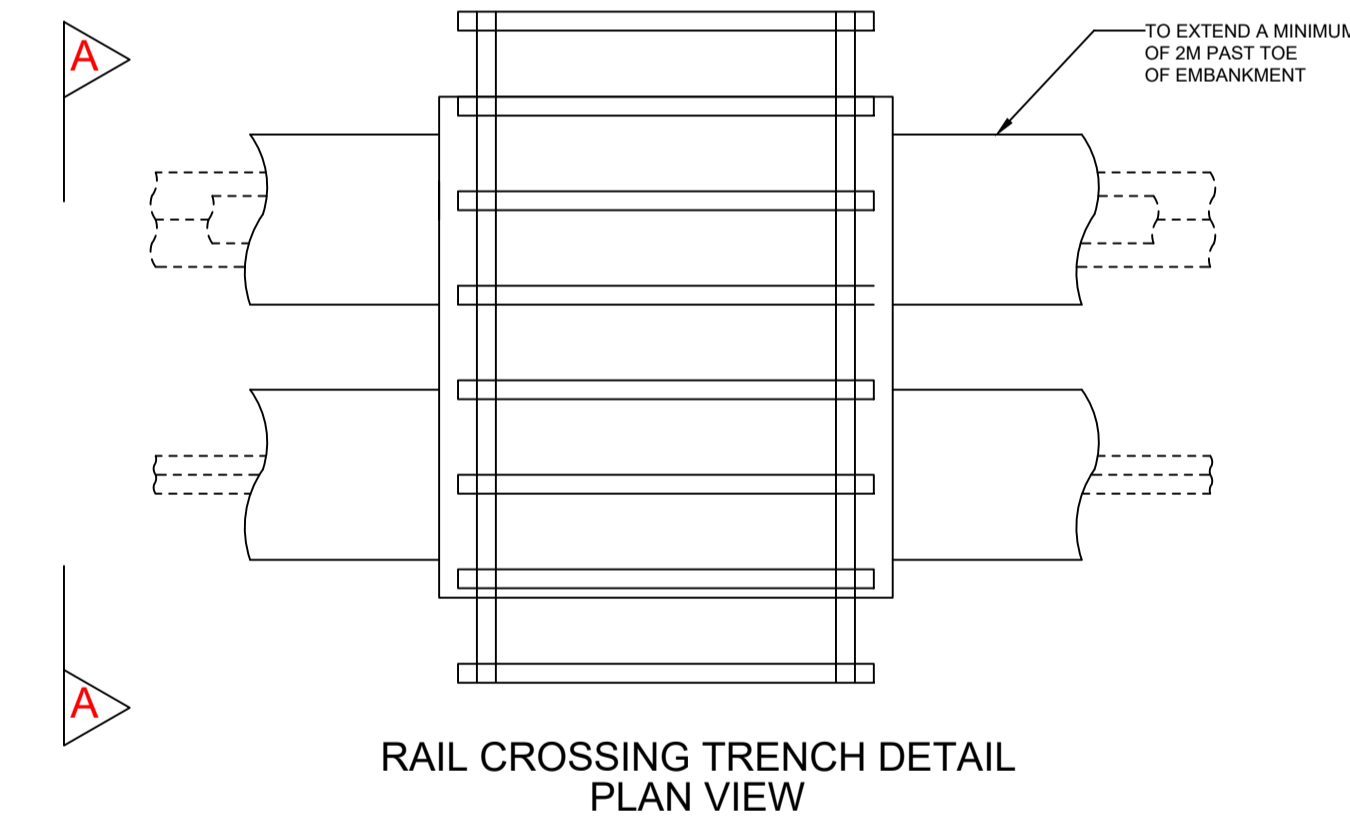
ROAD CROSSING TRENCH DETAIL



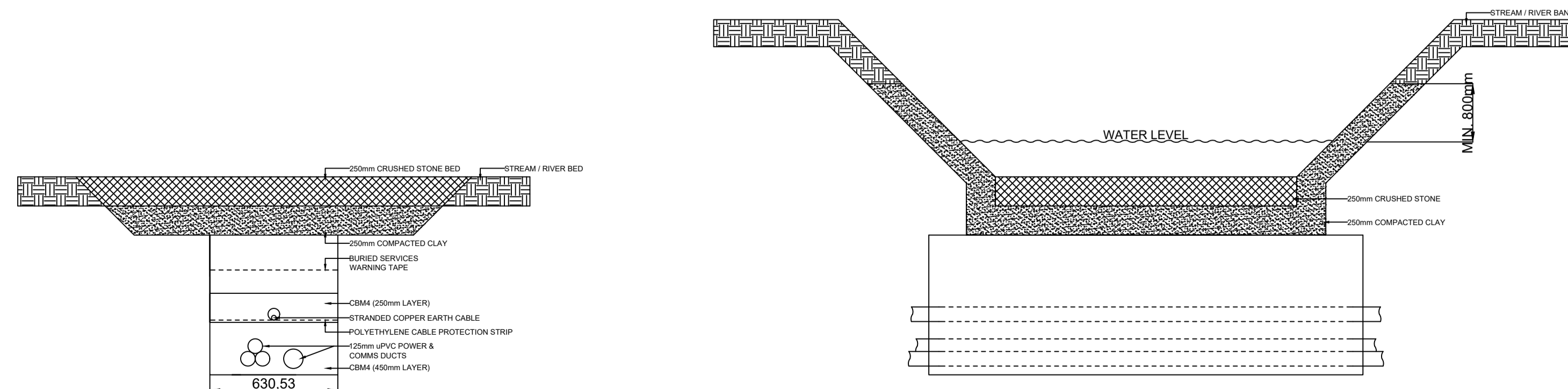
MET MAST TRENCH DETAIL



STREAM CROSSING TRENCH DETAIL PLAN VIEW NTS

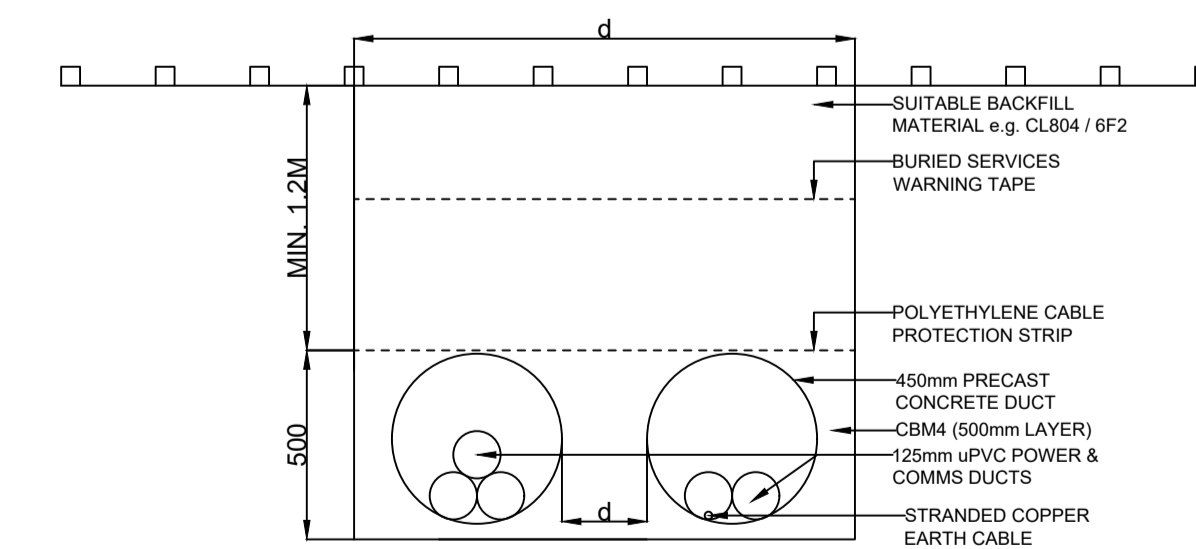


RAIL CROSSING TRENCH DETAIL PLAN VIEW



STREAM CROSSING TRENCH DETAIL SECTION VIEW A - A NTS

STREAM CROSSING TRENCH DETAIL SECTION VIEW B - B NTS



RAIL CROSSING TRENCH DETAIL SECTION VIEW A - A

PROJECT TITLE: Lemanaghan Wind Farm, Co. Offaly		
DRAWING TITLE: Internal Collector Network Trench Arrangement Detail		
PROJECT No.: 200804	DRAWING No.: 200804-31	SCALE: 1:20 @ A1
DRAWN BY: FB	CHECKED BY: GO	DATE: 26.03.2026
		REVISION: P01

